



**Urban Mobility**  
STRATEGY

# The Engineering of Tolling

Monday, March 4th, 2024

## Northwest Transportation Conference

Atousa Gorg, PE



# Outline



# I-205 Toll Project

## Description

- Implementation of tolling at the Abernethy Bridge only
- Toll point at the I-205/OR 43 interchange
- Status: Design and NEPA in progress

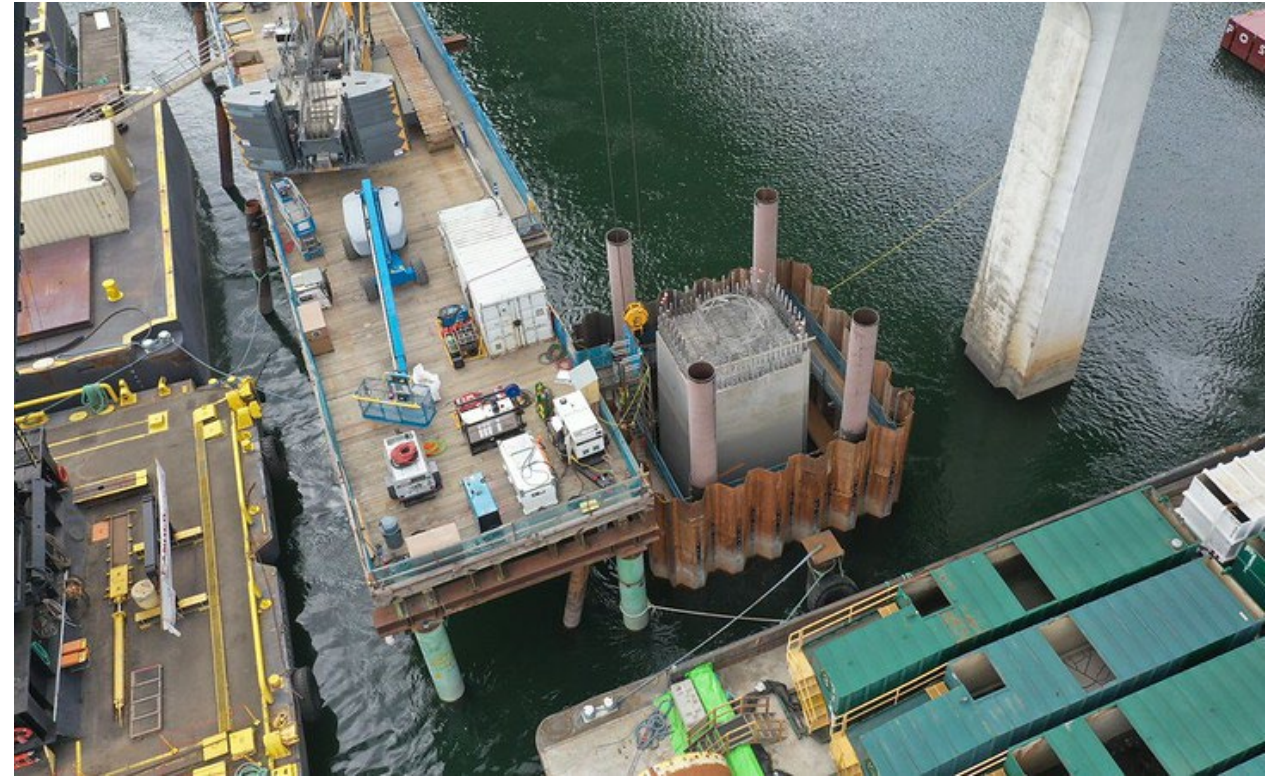
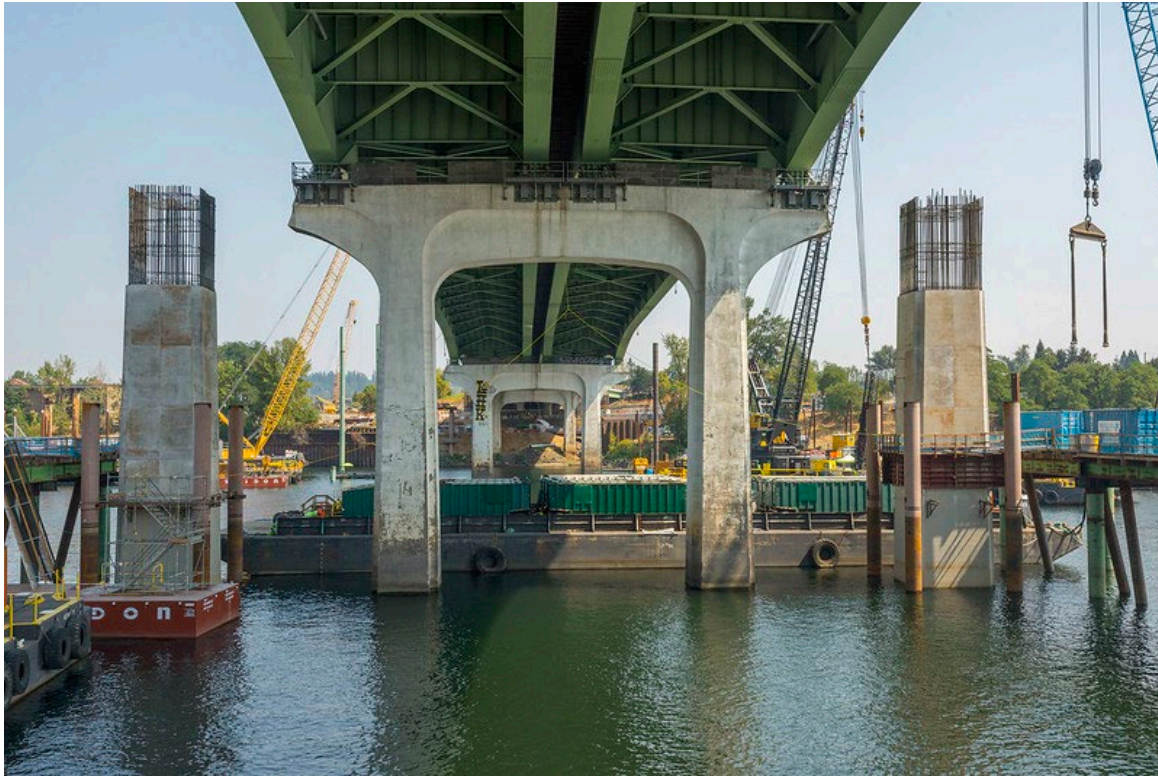


# I-205 Toll Project: Anticipated Benefits

- Funding for Abernethy Bridge seismic upgrades and safety improvements.
- Variable rate tolls will support reduced congestion.



# Abernethy Bridge will be first earthquake-ready interstate bridge across the Willamette River in the Portland area.



# I-205 Toll Project: 2023 engagement

## **Environmental Assessment**

*February to April*

- 2,800 comments
- 4 business districts canvasses
- 13 briefings
- 7 in-language discussion groups
- 7 tabling events

## **Summer tabling**

*May to October*

- 28 events
- 4,700 interactions
- 11 events coordinated with community-based organizations

# I-205 Toll Project: 2024 engagement

## Beginning this spring: *Toll Talks*

- Focused community tabling, coffee chat and presentation opportunities throughout the Portland metro area.
- Scheduling in-process

## Summer 2024: Supplemental Environmental Assessment

- In-person, online engagement and inclusive outreach to provide opportunities to answer questions and collect comments

## Member Representation

Washington County Community Engagement

Oregon Environmental Council

At-large member

Beyond Black/Play, Grow, Learn

WorkSystems Inc. Board

Disability Awareness Resource Team (DART)

At-large member; Columbia Distributing

TriMet

Clark County Juvenile Court

Clackamas County Public Health Department /  
Department of Transportation & Development

City of Vancouver

Fourth Plain Forward

At-large member

Ride Connection

# Equity and Mobility Advisory Committee (EMAC)







# Low-income toll program on day one

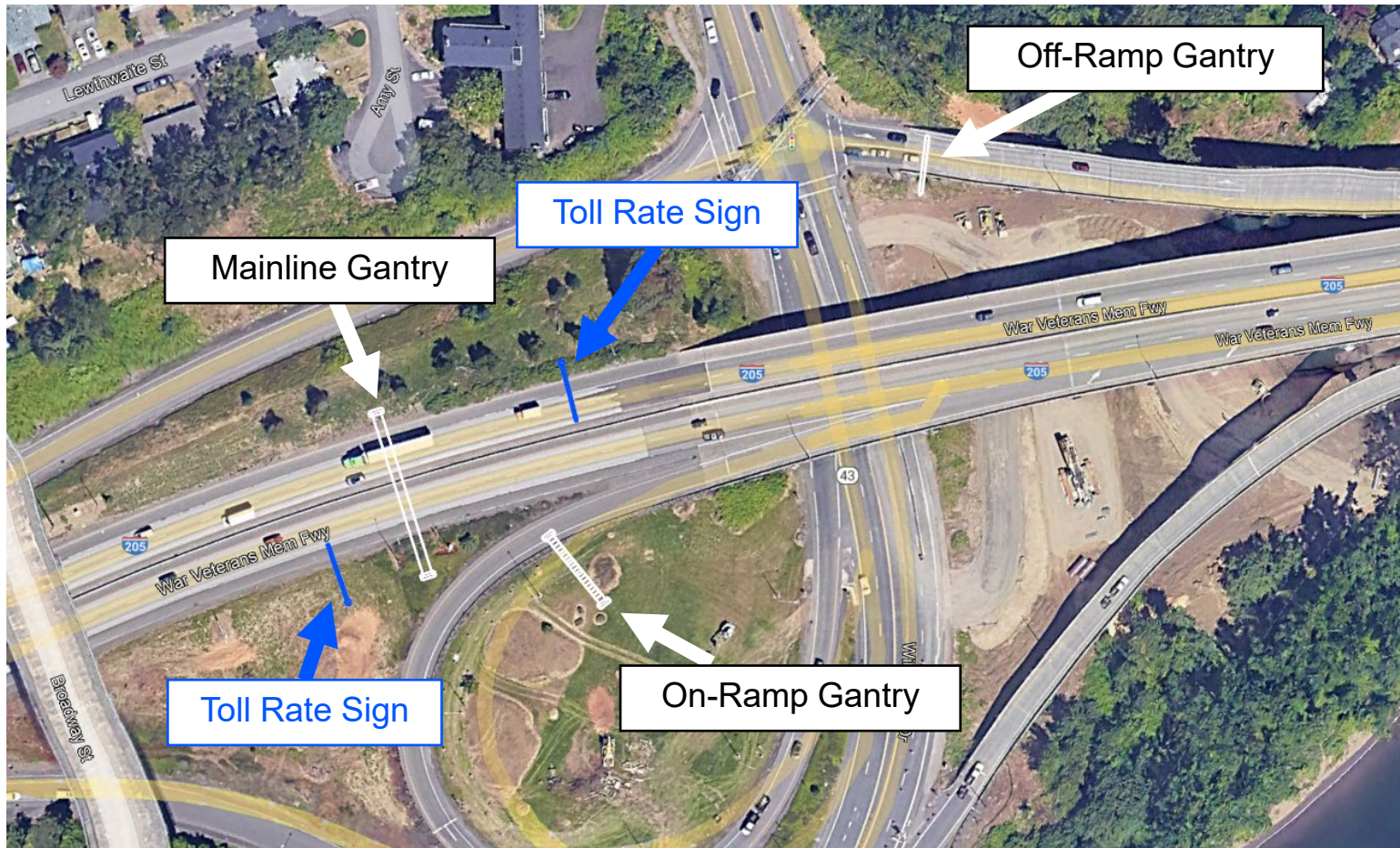
## Setting a national precedent:

- Four other low toll income programs currently exist
- Program will be the first in the nation operable on day one of tolling

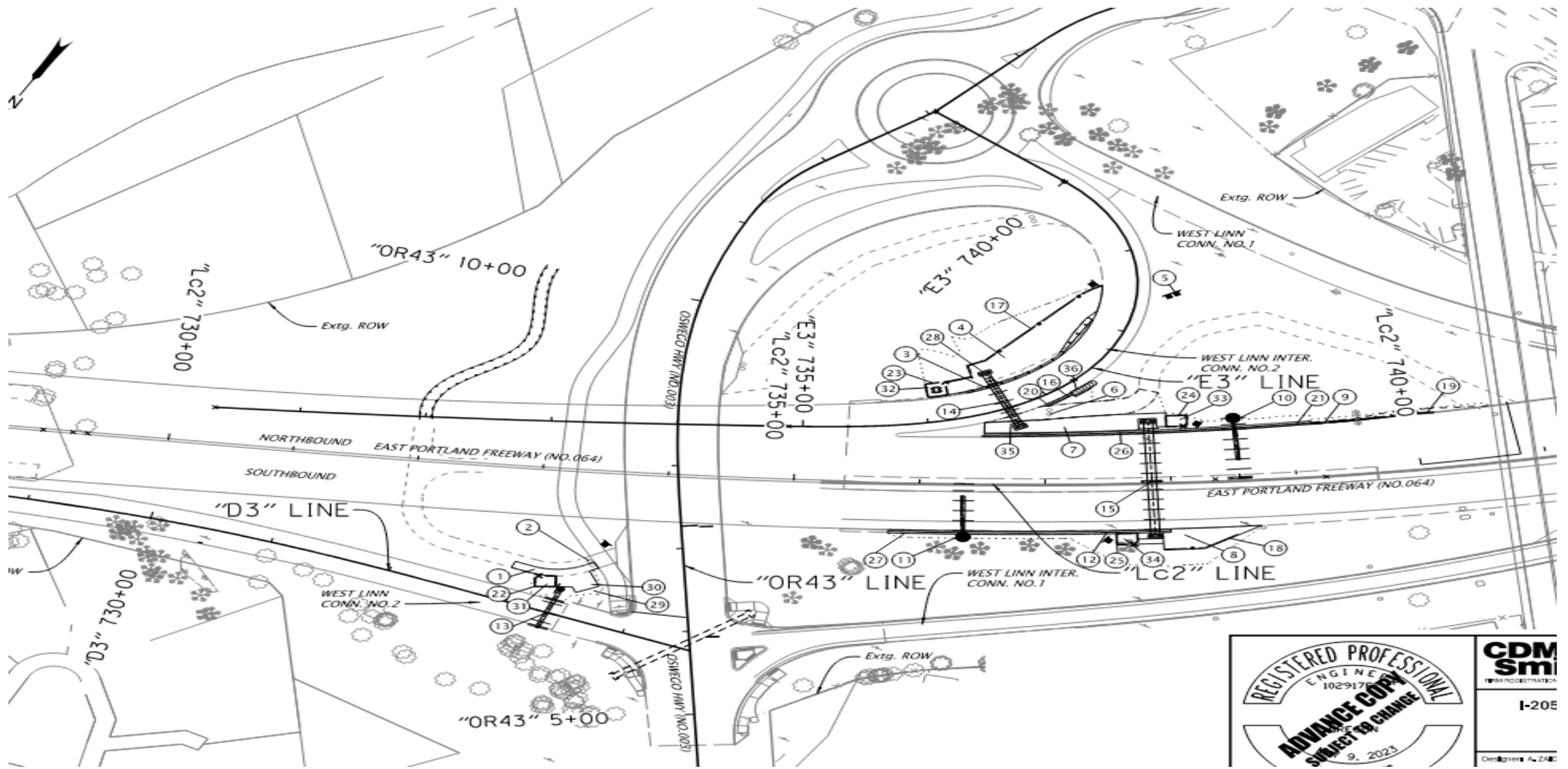
## Oregon Transportation Commission direction:

- Offer a **50% discount** for incomes up to **200% of the Federal Poverty Level** (~\$60,000 for household of four in 2023) on day 1 of toll collection
- Analyze potential future discounts for incomes up to **400% Federal Poverty Level** (~\$120,000 for a household of four in 2023)
- Extend eligibility to residents of both Oregon and Washington

# I-205 Toll Project Location

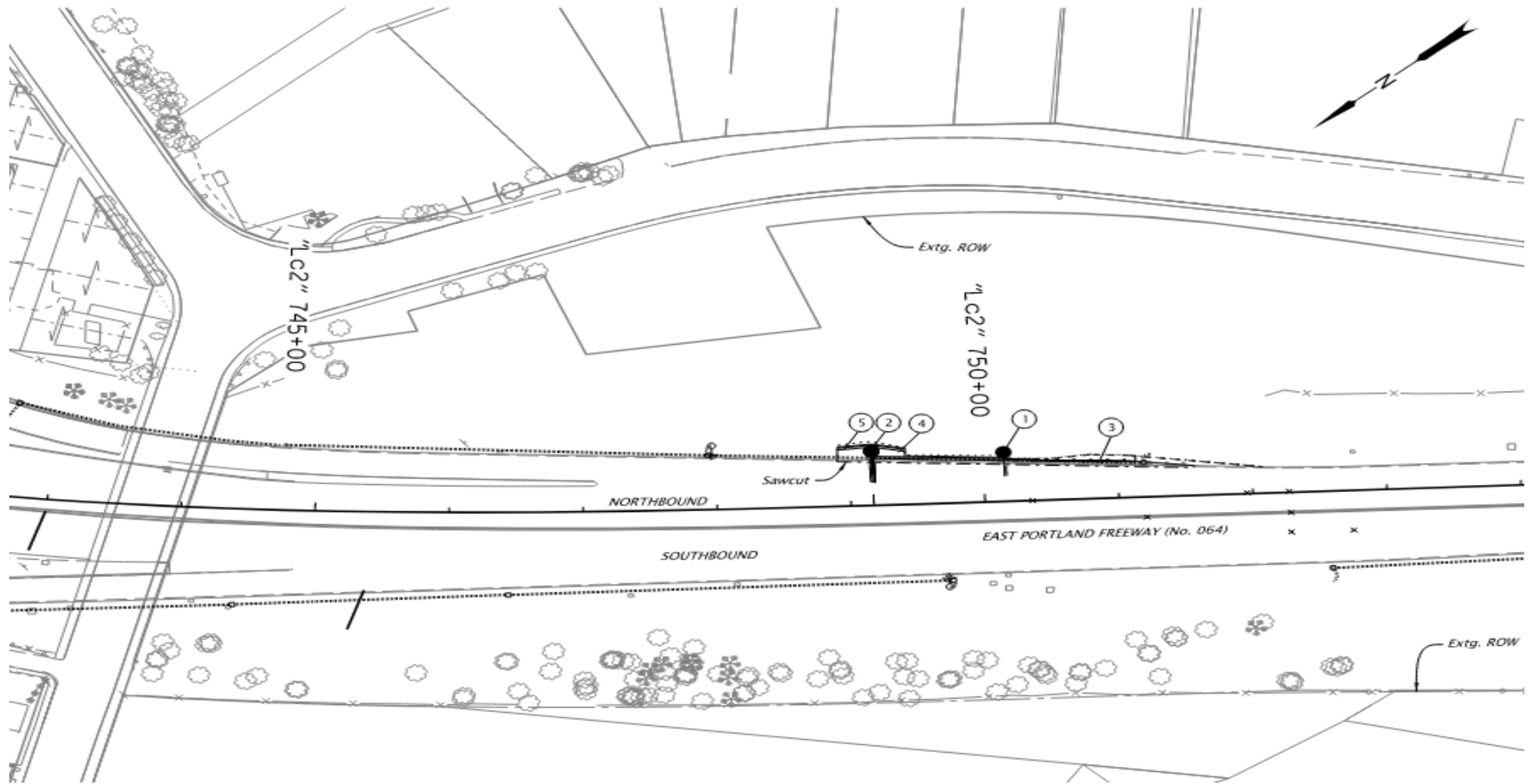


Disclaimer: Draft for visualization and final plans and road configuration are subjected to change.

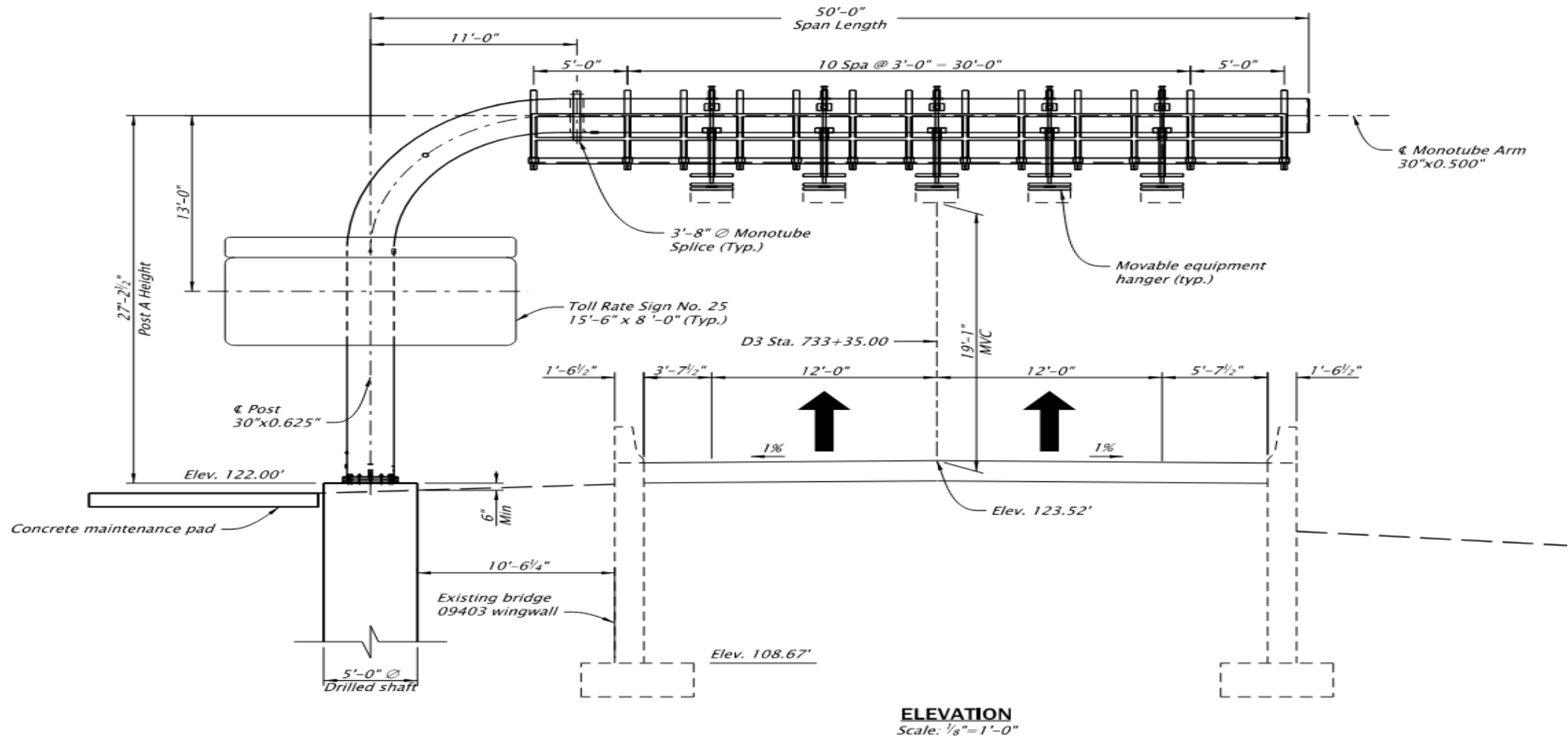


<p>REGISTERED PROFESSIONAL ENGINEER 1029175 <b>ADVANCE COPY</b> SUBJECT TO CHANGE 9. 2023</p>	<p><b>CDM Sm</b> I-205 Designer: A. ZAR</p>
---	---

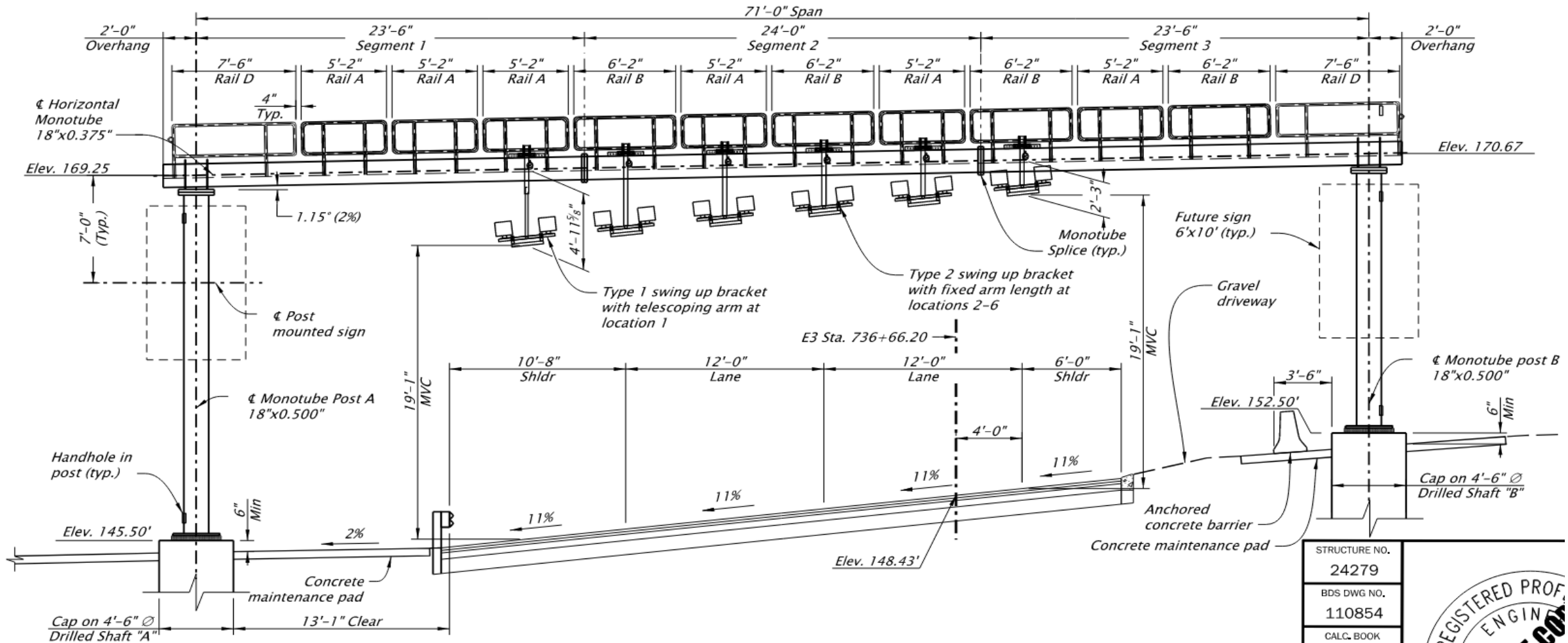
Disclaimer: Draft for visualization and final plans and road configuration are subjected to change.



Disclaimer: Draft for visualization and final plans and road configuration are subjected to change.



Disclaimer: Draft for visualization and final plans and road configuration are subjected to change.



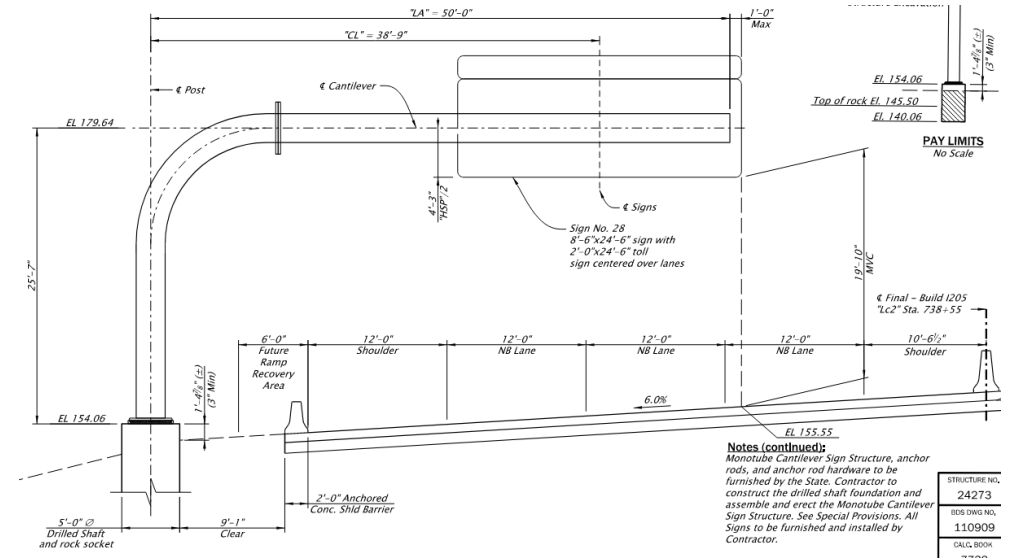
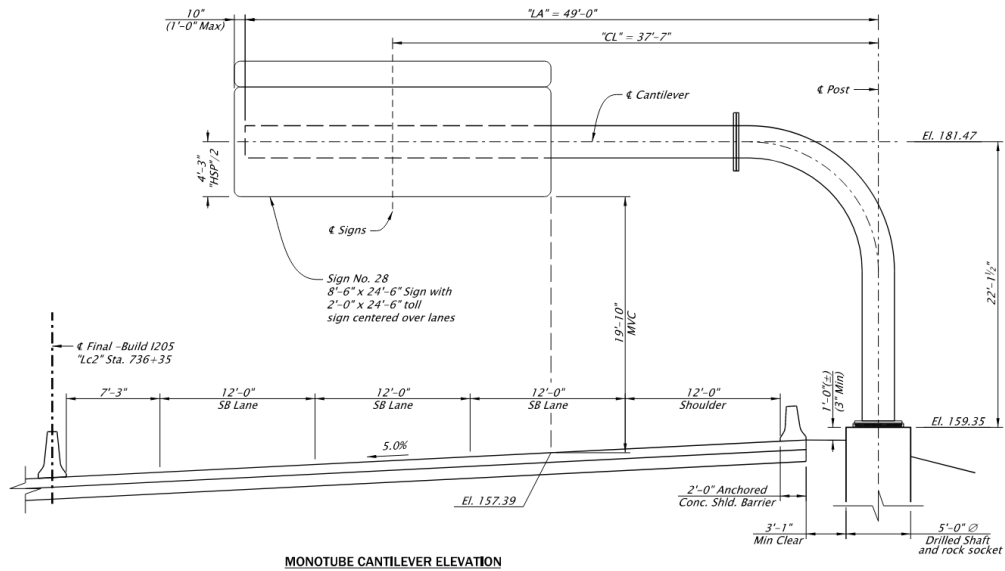
**ELEVATION**  
Scale: 1/8" = 1'-0"

STRUCTURE NO.	24279
BDS DWG NO.	110854
CALC. BOOK	7743
HWY:	003
M.P.:	011.35 con



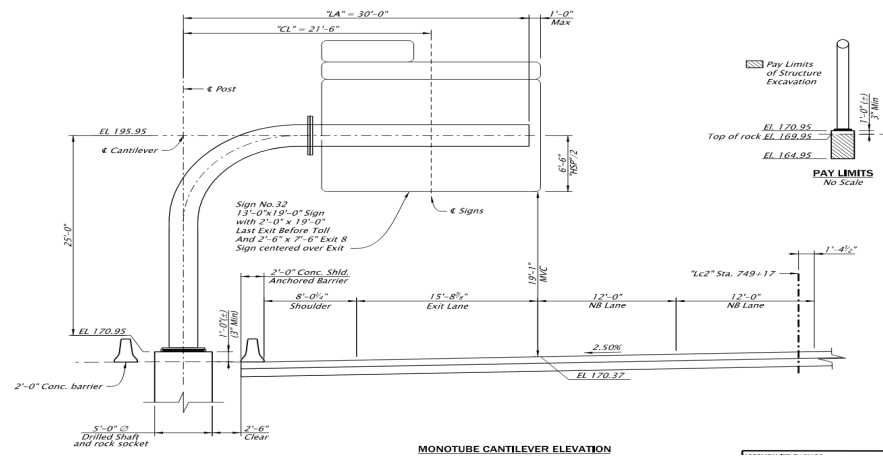
Disclaimer: Draft for visualization and final plans and road configuration are subjected to change.





**Notes (continued):**  
 Monotube Cantilever Sign Structure, anchor rods, and anchor rod hardware to be furnished by the State. Contractor to construct the drilled shaft foundation and assemble and erect the Monotube Cantilever Sign Structure. See Special Provisions. All Signs to be furnished and installed by Contractor.

STRUCTURE NO.	24273
SOS DWG NO.	110909
CALC BOOK	



Disclaimer: Draft for visualization and final plans and road configuration are subjected to change.

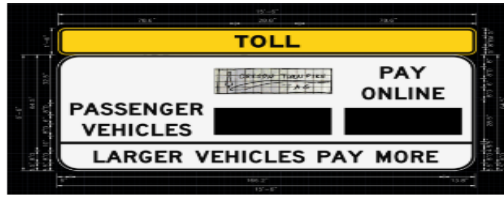




# Sign Design

Toll Rate Sign on I-205 SB/OR43 Exit Ramp Gantry

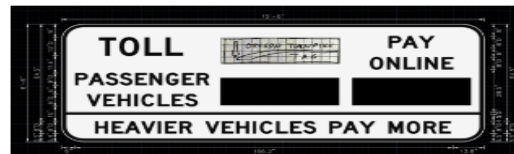
Current Design



- Replace "LARGER" with "HEAVIER"
- No increase in width
- Incorporate "TOLL" message in sign on standard warning plaque

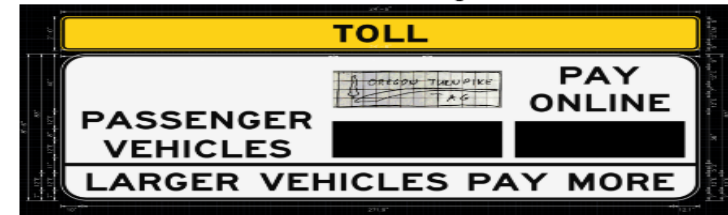


- Replace "LARGER" with "HEAVIER"
- No increase in width
- Incorporate "TOLL" message in sign (alternate design, more similar to standard MUTCD R3-28 toll rate sign)



Toll Rate Sign on I-205 Mainline (Overhead)

Current Design



- Replace "LARGER" with "HEAVIER"
- 6" increase in width
- Incorporate "TOLL" message in sign on standard warning plaque



- Replace "LARGER" with "HEAVIER"
- 6" increase in width
- Incorporate "TOLL" message in sign (alternate design, more similar to standard MUTCD R3-28 toll rate sign)



Disclaimer: Draft for visualization and final plans and road configuration are subjected to change.

# Sign Designs

Design Option A



12"E Font

Design Option B



Alternate Layouts



"NO CASH - DO NOT STO



E-Z Pass logo included



E-Z Pass logo included,  
stacked vertically



Modified message



10"E Font



8"E Font

Disclaimer: Draft for visualization and final plans and road configuration are subjected to change.

# I-205 Toll Schedule

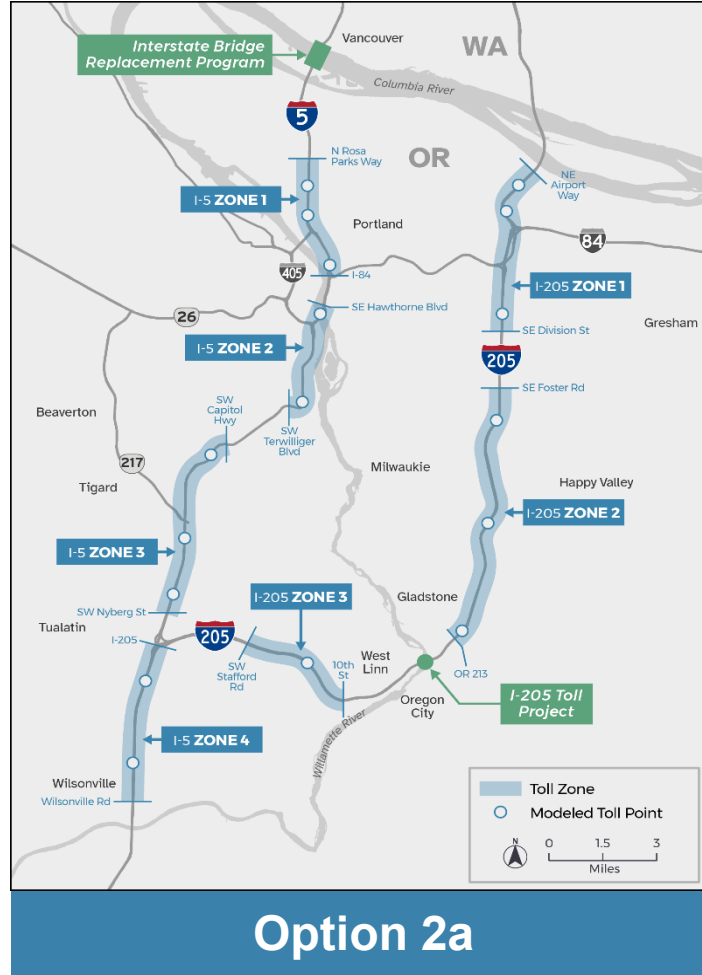
Design and NEPA - 2024

Construction & Roadside  
Implementation - 2025

Go Live Date - 2026

# Current RMPP Design Options

\*currently undergoing refinements with partner input



Disclaimer: Draft for visualization and final plans and road configuration are subjected to change.

# Regional Mobility Pricing Project

## Design Options

- Peak hour toll zones in the most congested areas of I-5 and I-205
- A systemwide base toll on I-5 and I-205 with additional peak pricing

## Status

- Currently analyzing how well the toll options meet traveler and regional needs
- Environmental Assessment anticipated in 2025
- Planning and design to support the NEPA



# Regional Mobility Pricing Project: Anticipated Benefits

- More reliable trip times
- Reduced Vehicle Miles Traveled (VMT)
- Mode shifts and positive diversion
- Revenue for operations and maintenance
- Potential for excess net revenue to help fund UMS and gain additional safety, mobility and seismic benefits
- Local and regional economic benefits
- Cost savings for freight



# Thank You! Questions?

Atousa Gorg, PE

Resident Engineer – Consultant Projects  
Oregon Department of Transportation, UMO

[Atousa.GORG@ODOT.oregon.gov](mailto:Atousa.GORG@ODOT.oregon.gov)

