



**DLCD**



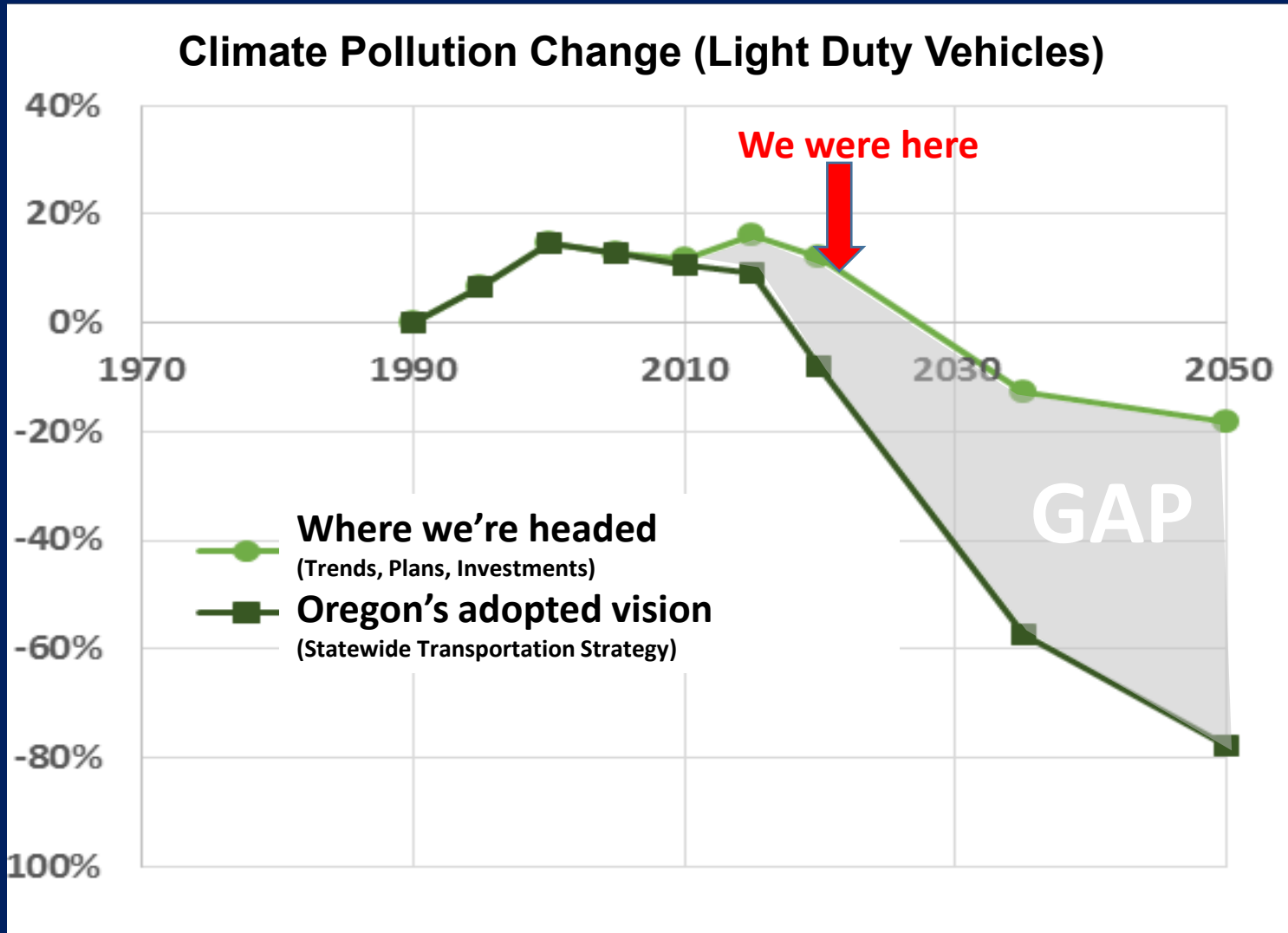
# Climate-Friendly and Equitable Communities



Northwest Transportation Conference  
**Evan Manvel** [evan.manvel@dlcd.oregon.gov](mailto:evan.manvel@dlcd.oregon.gov)

March 4, 2024

# Missing Oregon's Pollution Reduction Targets



## CLIMATE & ENVIRONMENT >

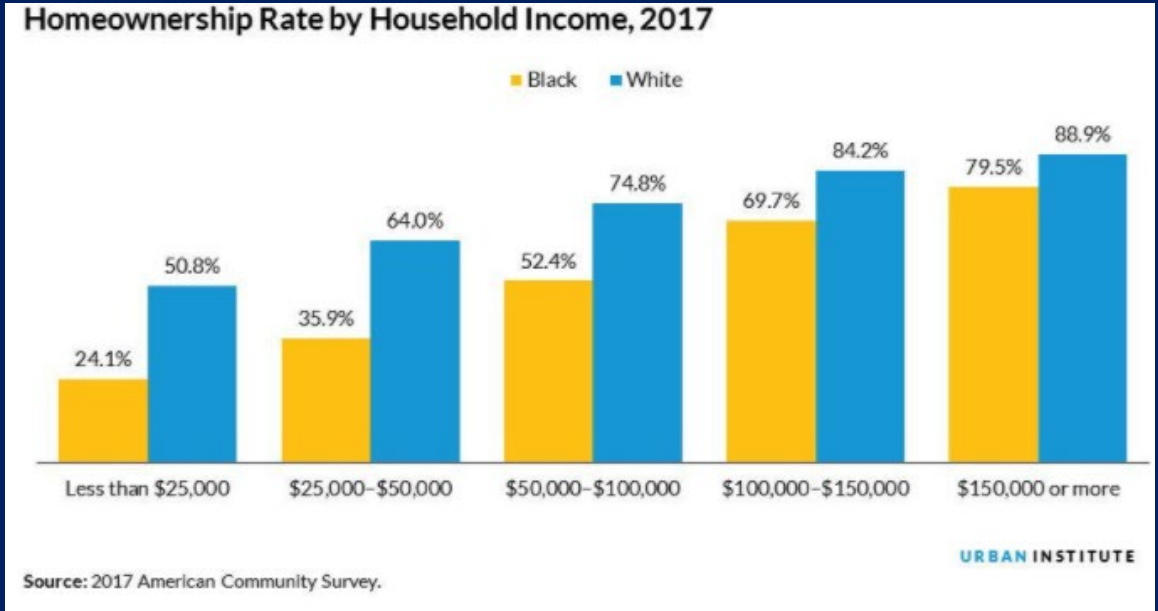
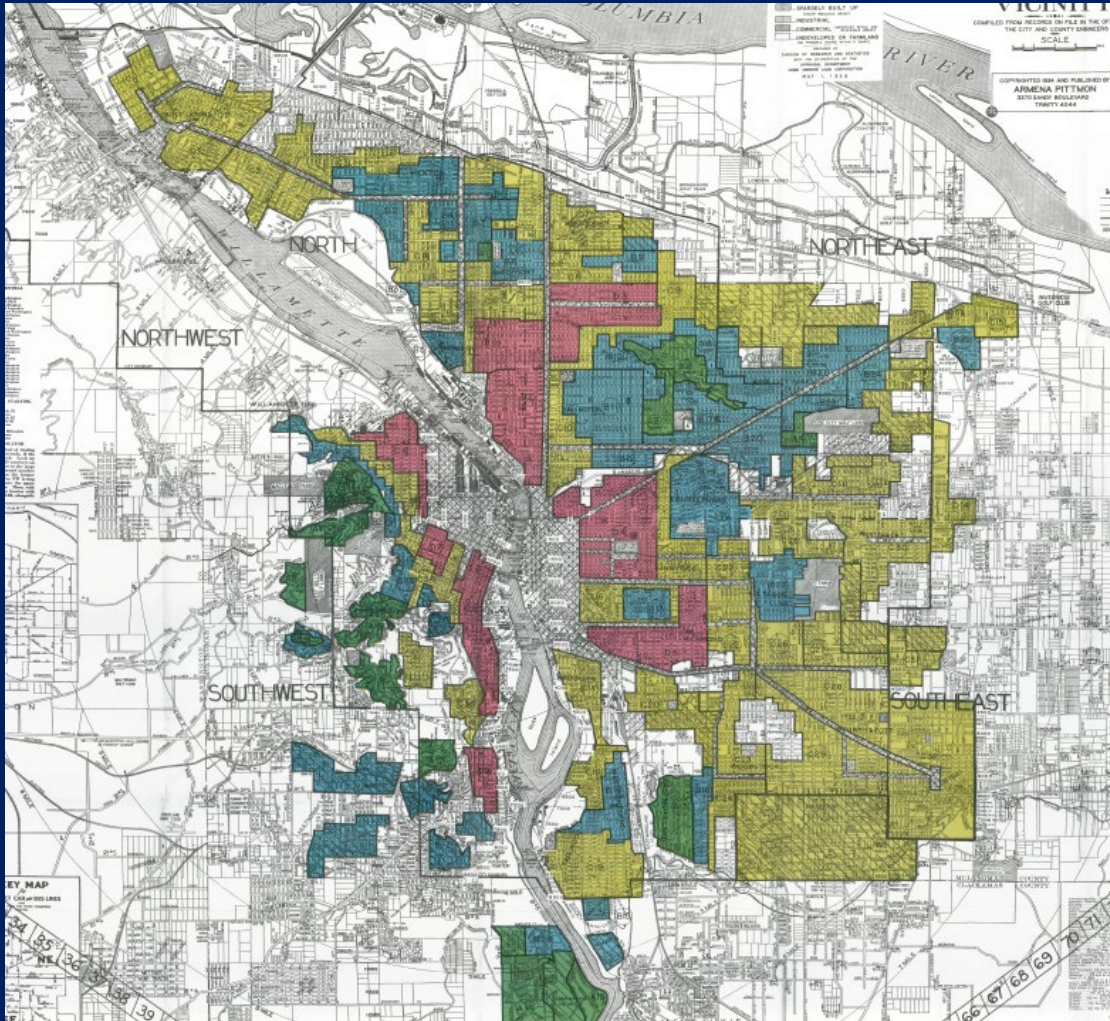
### The world needs to cut its emissions seven times as fast to hit climate goals, U.N. report finds

"We're just so far off track," says one co-author, calling for bolder and more urgent action from major emitters.

By Brady Dennis



# Inequity and Generational Wealth



71.9% of white households own homes  
41.8% of Black households own homes

The 30.1% gap is wider than it was when race-based discrimination against homebuyers was legal.  
(2017, Urban Institute)



2020

# Community Engagement

2022

## Scoping

- Equity training
- 34 Interviews
- 100 Survey Respondents
- Joint DLCD/ODOT Policy Options Analysis
- Multi-agency Equity Workshops

## Rulemaking

- 40+ Person Advisory Committee
- 4 Spring Regional Public Workshops
- 5 Fall Regional Public Workshops
- 6 Regional Practitioner Meetings
- 8 Technical Workgroup Meetings
- Over 200 meetings and consultations

## Implementation

- Local Community Engagement
- Agency Budget Request
  - Racial Equity Impact Statement
  - Community Interviews
  - Community Needs Forum
  - Local Government Needs

# Reminder to Put Ourselves in Other's Shoes

	At this meeting	Oregon
Household income under \$60,000	11%	50%
Have a disability	4%	25%
People of Color	7%	24%
Renters	18%	38%

Meeting skews older than Oregonians.

Public meetings are most accessible to those with extra time and resources, with internet connections, and who use English as a first language.

(% at meeting based on voluntary opt-in during registration)

# Climate-Friendly and Equitable Communities Rulemaking

## Equitable Outcomes Statement

Version 7



**OREGON**  
Department of  
Land Conservation  
& Development

### Context and Purpose

Governor Brown’s [Executive Order 20-04](#) directed the Department of Land Conservation and Development and the Land Conservation and Development Commission to reduce greenhouse gas emissions and improve equitable outcomes for underserved populations. This Climate-Friendly and Equitable Communities rulemaking initiative aims to do just that – provide rules to support a program to reduce climate pollution and improve outcomes for Oregonians as a whole, and for specific underserved populations. These populations are described in this document below.

To successfully develop these rules, staff and the Commission are relying heavily on the thoughtful, informed guidance from Rulemaking Advisory Committee (RAC) members, including members of these underserved populations.

This statement has been developed to guide development of the rules, guidance documents, and technical assistance the Department provides as local governments implement these rules over time.

### Future Vision

We are building a future where:

- All Oregonians live in safe, livable, and healthy neighborhoods
- All Oregonians have access to clean air and water, stable housing, healthy food, convenient and affordable transportation options, health care and living wage jobs
- Systemic and institutional inequities based on race, income, age and disability no longer exist
- Underserved populations no longer bear the largest burdens of pollution, environmental and natural hazards, and environmental degradation
- Local decision-making ensures underserved populations directly benefit from quality housing, jobs and transportation choices
- Communities are held accountable for the achievement of racial equity and other dimensions of equity

### Equity-Driven Processes

The rules, guidance and technical assistance will create and further state and local decision-making processes that:

Equitable Outcomes Statement	Rulemaking and Implementation
Assess, document, acknowledge and address where past policies and effects of climate change have harmed and are likely to perpetuate harm to underserved populations	Part of the equity analysis required under 660-012-0135(2)(b)
Are in languages and formats that can be used by everyone	660-012-0130(1)(c)
Are accessible to people with disabilities	660-012-0130(1)(c)
Are accessible to people without computer/internet access, with limited transportation and child care options, and with schedule constraints around employment or other critical responsibilities	660-012-0130(1)(c)
Build the ability of people and governments to work together and access opportunities regionally	Scenario planning rule requirements in OAR Chapter 660, Division 044
Monitor and evaluate the effects and actions of local and regional policies and decisions, ensuring transportation and other community development and public investments move communities towards the future vision above	660-012-0130(1)(d) 660-012-0315(4)(f) (Analysis of fair and equitable housing outcomes) 660-008-0050(4)(a) (Location of housing) 660-012-0012(3)(e) 660-044-0110(9)(c) (Equity performance measure)

### Underserved Populations

The Equitable Outcomes Statement:

*“Climate pollution reduction efforts will prioritize actions that result in more just and equitable outcomes for all Oregonians, with a focus on historically and currently marginalized communities, using an intersectional approach that leads with race. ... [list of populations]*

*“These underserved populations should not just be considered in isolation, but with consideration of intersecting or compounding harms and disadvantages.”*

Draft rules:

# Underserved Populations

**Include, but are not limited to:**

- (a) Black and African American people;
- (b) Indigenous people (including Tribes, American Indian/Alaska Native and Hawaii Native);
- (c) People of Color (including but not limited to Hispanic, Latina/o/x, Asian, Arabic or North African, Middle Eastern, Pacific Islander, and mixed-race or mixed-ethnicity populations);
- (d) Immigrants, including undocumented immigrants and refugees;
- (e) People with limited English proficiency;
- (f) People with disabilities;
- (g) People experiencing homelessness;
- (h) Low-income and low-wealth community members;
- (i) Low- and moderate-income renters and homeowners;
- (j) Single parents;
- (k) Lesbian, gay, bisexual, transgender, queer, intersex, asexual, or two-spirit community members; and
- (l) Youth and seniors.

# **Rules (OAR 660-012-0120 through 0135)**

Early engagement in performance measures/outcomes

Center voices of underserved; give decision-making power

Additional outreach to underserved; tribal engagement

Report on progress annually

## **Engagement-focused equity analysis**

Gather qualitative and quantitative info

Analyze changes for impacts

Adopt strategies to address

Report back



# Major Equity Analysis (OAR 660-012-0135)

Assess, document, acknowledge, and address where:

current and past land use, transportation, and housing policies and effects of climate change

have harmed or are likely to harm underserved populations

Assess, document, acknowledge, and address where:

current and past racism in land use, transportation, and housing policies

has harmed or are likely to harm underserved populations

# Work Thus Far

## Climate-friendly areas (15 communities)

- Engagement plans; relationship building
- Plans to achieve fair and equitable housing outcomes per OAR 660-0008
- Anti-displacement reviews and tool identification

**Multicultural Collaborative is building equity engagement toolkit and draft guidance**

**University of Oregon group developing history resources**

# Local Examples Thus Far

## Portland

Community interviews

Refine History of Racist Planning (2019)

Story-telling with video

Community advisory committee

Focus groups

Interactive map of redlining by Portland neighborhood

[View the map ↗](#)

Interactive map of urban renewal by Portland neighborhood

[View the map ↗](#)

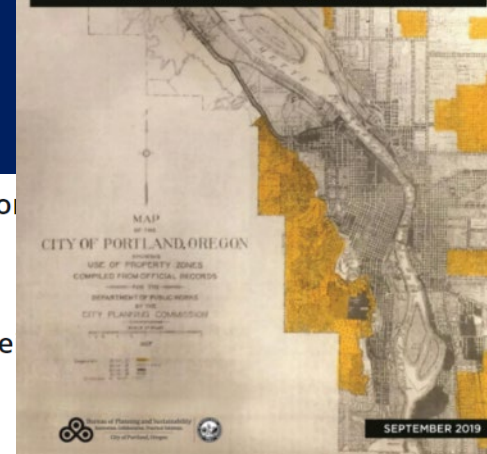
Map of Portland racist covenants

The Bureau of Planning and Sustainability has partnered with Greta Smith, a Portland State University Masters student in the Department of History, to create an interactive map showing the location of racist covenants in Portland.

[View the map ↗](#)

## HISTORICAL CONTEXT OF RACIST PLANNING

A HISTORY OF HOW PLANNING SEGREGATED PORTLAND



## Beaverton

History of racist land use and housing practices

Transportation ambassador-led engagement

Play-based visioning workshops

Focus groups



June 30, 2021 Planning Commi

### MEMORANDUM

#### Community Development Department

To: Chair Lawler and Planning Commission members

From: Brian Martin, Long Range Planning Manager

Date: June 23, 2021

Subject: History of racist land use and housing practices in Beaverton

# Local Examples Thus Far (TSPs)

## Clackamas County

Public health community partnership team

Workshops with resources (interpretation, child care, food)

## Tualatin

Community Advisory Committee composition

IDEA group to review/feedback



## Milwaukie

Start with the story of discrimination

# Thank you!

Evan Manvel

[evan.manvel@dlcd.oregon.gov](mailto:evan.manvel@dlcd.oregon.gov)

(971) 375-5979

[www.oregon.gov/LCD/CL/pages/cfec.aspx](http://www.oregon.gov/LCD/CL/pages/cfec.aspx)

Search: “DLCD CFEC”

Sign up for e-mail updates