

A Planner's Guide to Climate-Friendly and Equitable Communities

Theresa Conley, Evan Manvel & Zachary Horowitz

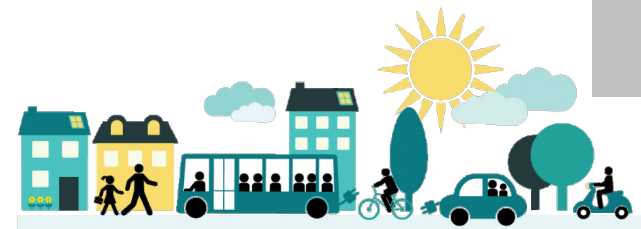
Northwest Transportation Conference

March 2024



Today's Guidebook

- CFEC Background & Planning Context
- Preparing a “CFECTSP”
- Deep dive into VMT planning
- Deep dive into Equity
- Discussion

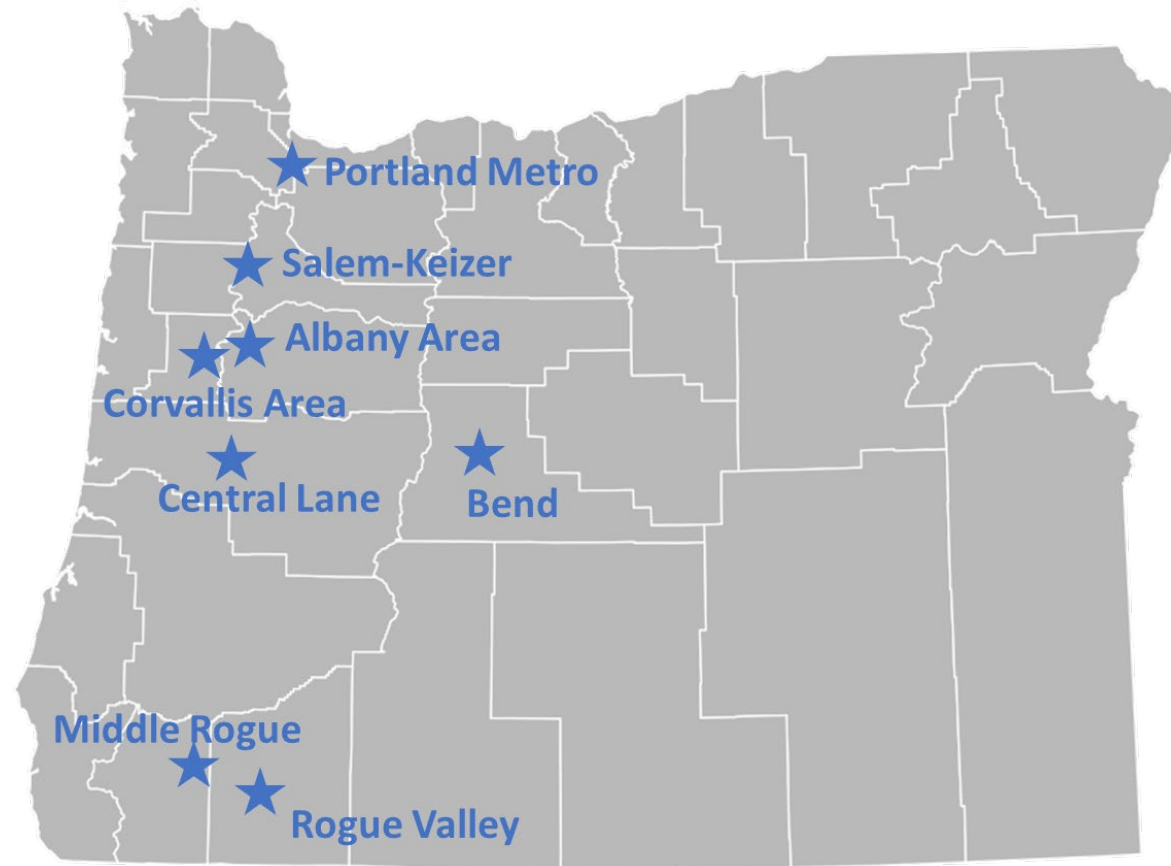


CFEC in Context



Planning to
meet the
State's Climate
& Equity Goals

CFEC Applies within Metropolitan Areas



Planning to meet the State's Climate & Equity Goals

Alignment with the Oregon Transportation Plan

The OTP is an **overarching transportation plan for Oregon's entire transportation system** – sets framework for policies & strategies through 2050

Vision: Oregon's transportation system supports all Oregonians by connecting people and goods to places in the most climate-friendly, equitable, and safe way.

Safety, Equity and Climate in the forefront



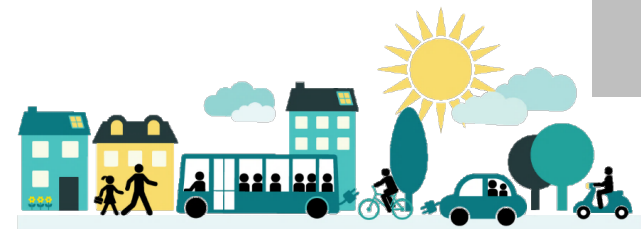
Planning to meet the State's Climate & Equity Goals

How to we plan to meet the State's climate & equity goals?

- Reframe community engagement
- Climate-friendly areas
- Reform parking management
- Support electric vehicle charging
- Regional GHG emission targets
- High quality pedestrian, bicycle, and transit infrastructure
- Go beyond focus on motor vehicle congestion standards
- Prioritize projects meeting climate and equity outcomes



Integrated into local planning processes



Preparing a “CFECTSP”

What Stays the Same?

- Same basic building blocks
- Define priorities, evaluate needs and plan for the future
- Involve the community and collaborate with partners
- Address all modes of travel to allow for transportation choices
- Develop a fiscally responsible investment plan



Preparing a “CFECTSP”

What’s new in a “CFECTSP”?

- GHG reduction targets adopted in TSP & influence project lists
- Reframing community engagement with targeted engagement, equity analysis and engagement that informs decision-making
- Two performance standards – one must be non-auto oriented
- Stronger multimodal inventory to support decision-making
- Holistic approach to safety
- Modeling focused on VMT/capita
- Multimodal & multi-agency constrained project list
- Vehicle capacity projects may require additional -0830 analysis



Preparing a “CFECTSP”

Next Steps - Groundwork before a TSP update

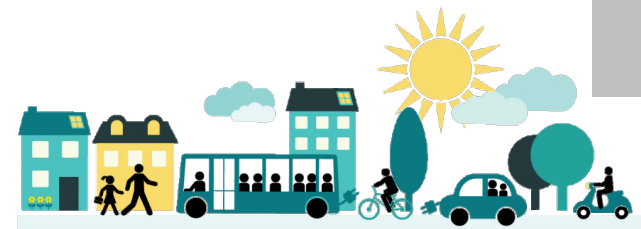
- Regional GHG target setting
- Climate Friendly Areas
- Parking Reform
- Review current TSP and consider key areas for updates
- Regional coordination
 - Prepare for multi-agency constrained project list
 - Identify likely -830 Projects*



*What is an “-0830 Project”?

A “speed bump” for capacity expanding projects

- Certain projects that increase vehicle capacity will require additional local review
- Regional coordination required
- Local decision to include on TSP project list
- If included on constrained project list, TSP must demonstrate overall VMT/capita reduction
- Good to consider early:
 - Which projects are likely to remain in the TSP
 - Clarify planning authority early
 - Consider likely VMT/capita outcomes of current TSP



ODOT & DLCD Resources

Guidance & Early Inventory Data in 2024

Multimodal
Inventory

Analysis
Procedures
Manual

TSP
Guidelines

Scenario
Planning

Modeling
Guidance

SOW
Template

DLCD CFA
Methods
Guide

DLCD
Engagement
Guidance

ODOT &
DLCD Funding



Contact Information

Theresa Conley

Theresa.L.Conley@odot.oregon.gov

CFEC Principal Planner – Statewide Planning

Zachary Horowitz, PE

Zachary.HOROWITZ@odot.oregon.gov

CFEC Transportation Analysis Engineer - TPAU

Evan Manvel

Evan.Manvel@dlcd.oregon.gov

Climate Mitigation Planner



Discussion